

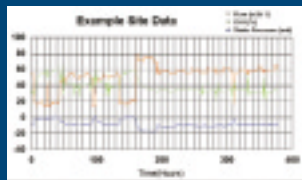
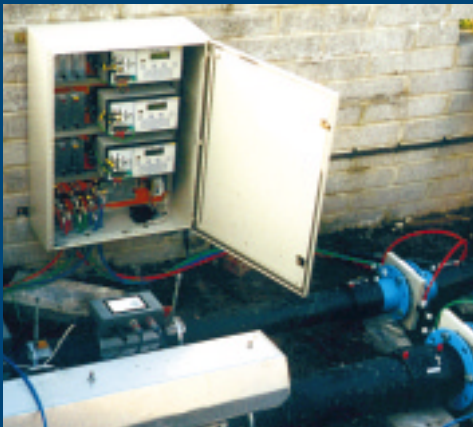
Gas Data LMSp

Panel Mounted Multichannel Gas and Environmental Analyser

Infra red Methane*, Carbon dioxide*, LEL* and Hydrocarbons. Oxygen*, atmospheric pressure*, differential pressure, flow rate and temperature.

*Standard channels

Designed to allow a modular approach to solving the problem of landfill gas analysis and flow measurement. Choose from a single self contained analyser with readout facilities only through to multiple data logging systems with control outputs, alarms and battery backup.



Standard Channels

- Infra red Methane (CH₄) by % volume and % LEL
- Infra red Carbon dioxide (CO₂) by % volume
- Oxygen (O₂) by % volume
- Atmospheric pressure (SI or Imperial units)

Optional Channels

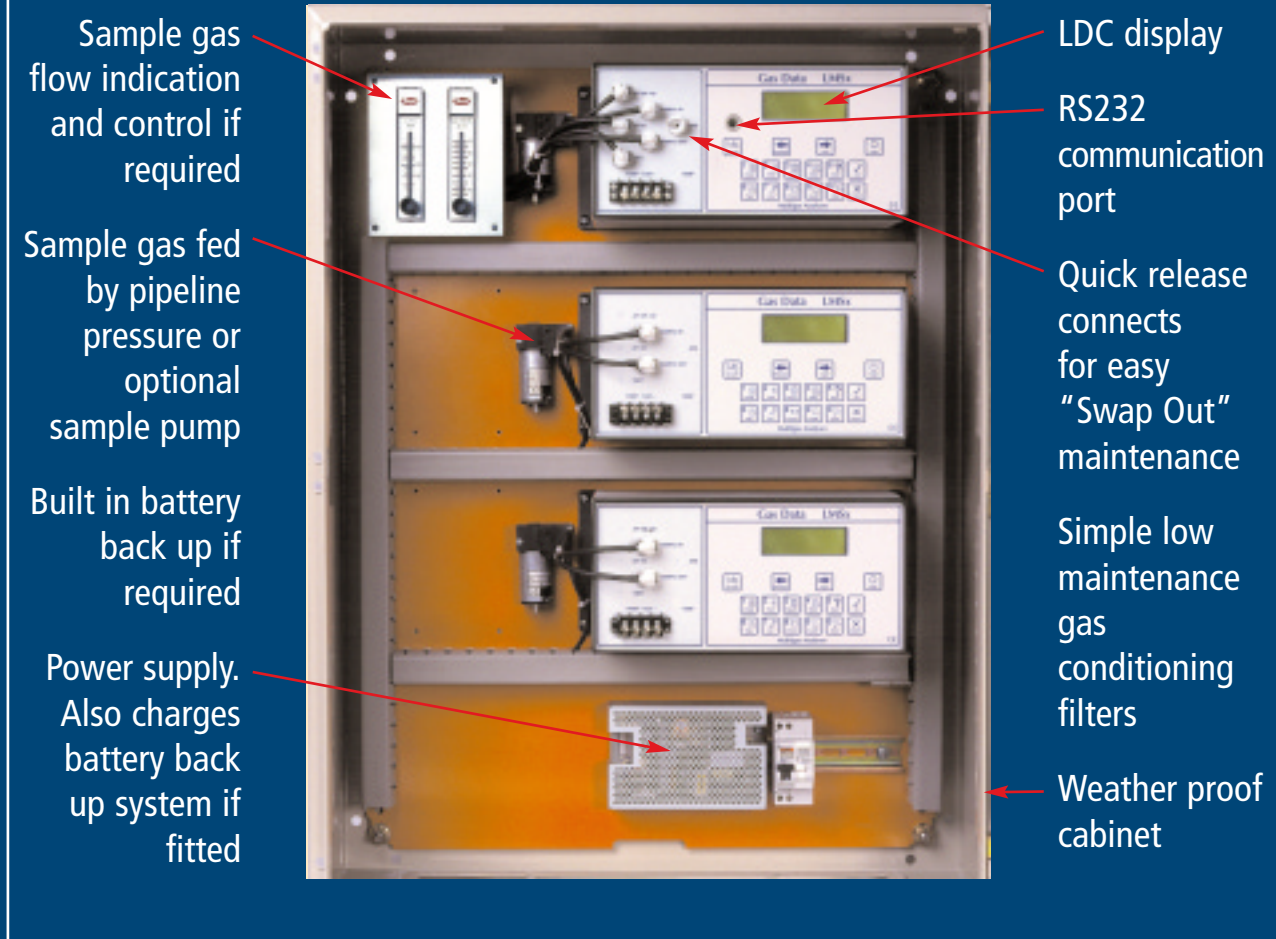
- Temperature (Precision thermistor or Ktype thermocouple)
- Pipeline pressure
- Differential pressure
- Gas flow rates (SI or Imperial units)
- Choice of 4 extra gas channels

Build and Interface Options

- Gas sample pump (DC or AC operation)
- Gas conditioning kits
- Sample flow rate indication and control
- Analogue (Voltage or Current) outputs
- Alarm outputs (Volt free n.o./n.c)
- Data logging
- Battery backup

Gas Data Ltd has been a leader in the field of infra red gas analysers and environmental monitors since 1993. Using the most advanced optical sensor technology, our infra red gas analysis techniques quickly deliver accurate results even under tough field conditions. Our instruments continue to offer an unbeatable combination of measurements giving our customers the best possible solution to their field monitoring requirements.

Typical 3 system cabinet installation



Other Instrumentation for landfill and contaminated land from Gas Data



LMSxi - Landfill Monitoring System



Bore Hole Logger - single point bore hole monitor



GF60 Bore Hole Flow Monitor

Service and Calibration

All instruments are supported by factory service and calibration.

- Free telephone technical product support
- Standard annual service and calibration
- Optional Planned maintenance is available giving lifetime warranty at fixed annual rate and courtesy loan instruments are available.

Gas Data Limited
Clifford Annexe
44 Binley Road
Coventry CV3 1JT U.K.
Tel: +44 (0) 24 7625 2288
Fax: +44 (0) 24 7625 2266
E-mail: sales@gasdata.co.uk
Web: www.gasdata.co.uk

